

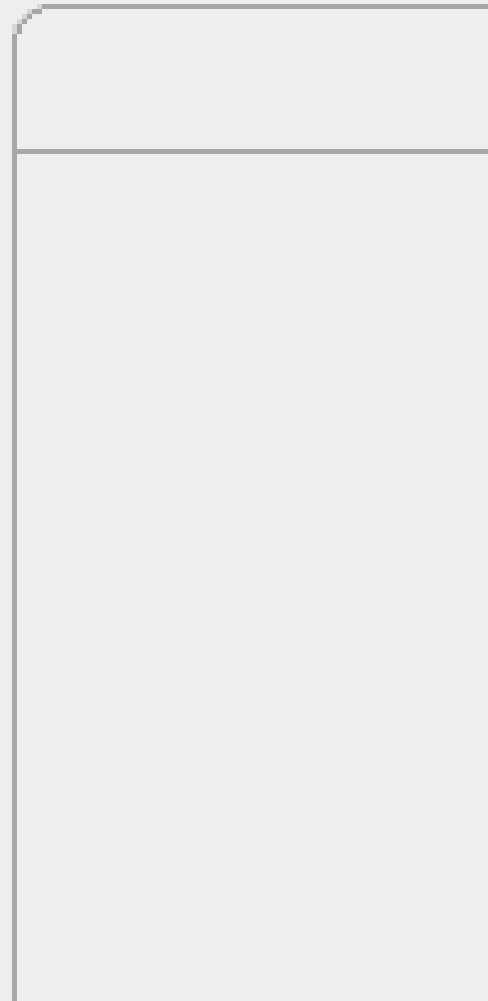
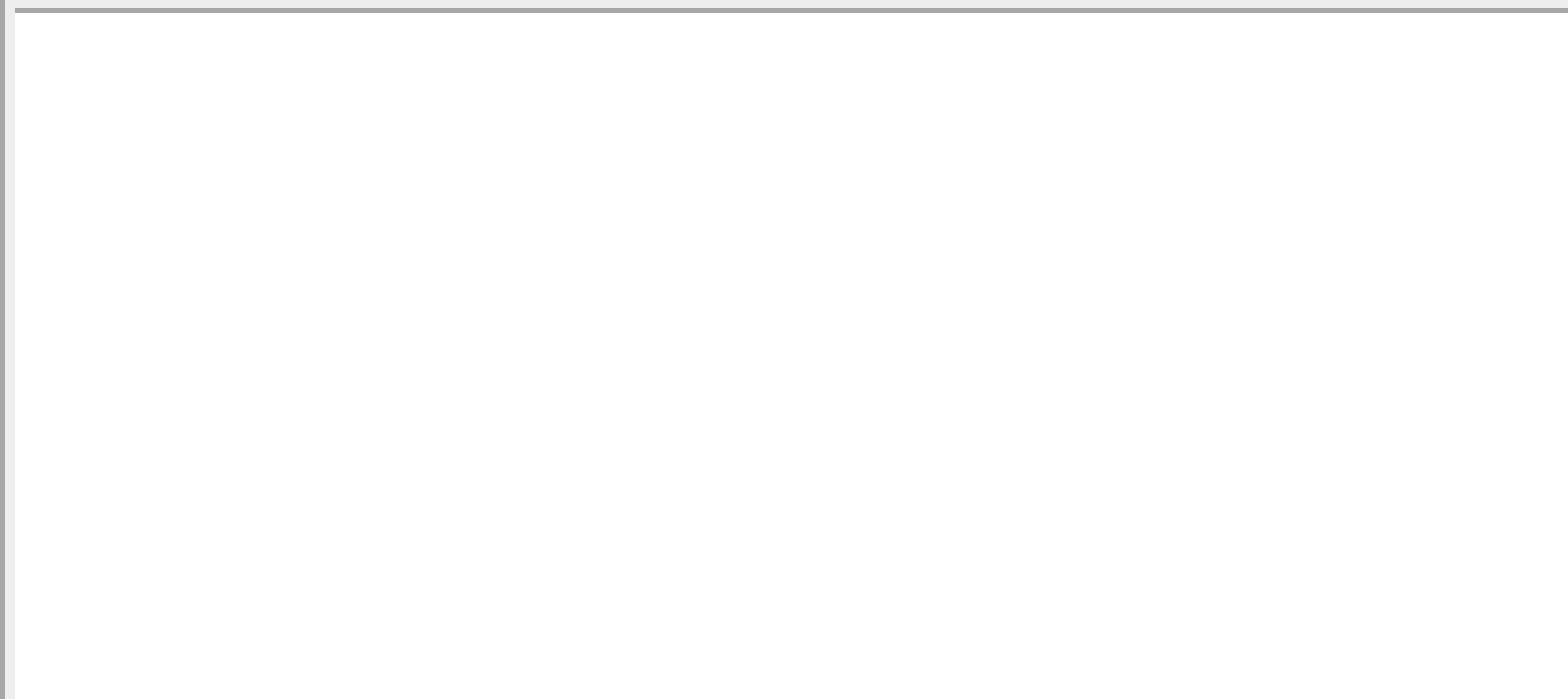
Groovy Eclipse Plugin

Follow the red box

File Edit Navigate Search Project Run Window **Help**



Package Explorer Hierarchy



 Welcome

 Help Contents

 Search

Dynamic Help

Key Assist... Shift+Ctrl+L

Tips and Tricks...

Cheat Sheets...

Software Updates ▶

About Eclipse Platform

 Find and Install...

 Manage Configuration

Install/Update



Feature Updates

Choose the way you want to search for features to install

Search for updates of the currently installed features

Select this option if you want to search for updates of the features you already have installed.

Search for new features to install

Select this option if you want to install new features from existing or new update sites. Some sites may already be available. You can add new update site URLs to the search.



< Back

Next >

Finish

Cancel

Install/Update

Feature Updates

Choose the way you want to search for features to install



Search for updates of the currently installed features

Select this option if you want to search for updates of the features you already have installed.

Search for new features to install

Select this option if you want to install new features from existing or new update sites. Some sites may already be available. You can add new update site URLs to the search.



< Back

Next >

Finish

Cancel

Update sites to visit

Select update sites to visit while looking for new features.



Sites to include in search:

- Eclipse Modeling Framework Technologies (EMFT) Updates
- Europa Discovery Site
- Graphical Editing Framework (GEF) Update Site
- Model Development Tools (MDT) Updates
- Mylyn
- Mylyn Extras
- The Eclipse Project Updates
- Web Tools Platform (WTP) Updates
- XML Schema Infoset Model (XSD) Updates

New Remote Site...

New Local Site...

New Archived Site...

Edit...

Remove

Import sites...

Ignore features not applicable to this environment

Automatically select mirrors

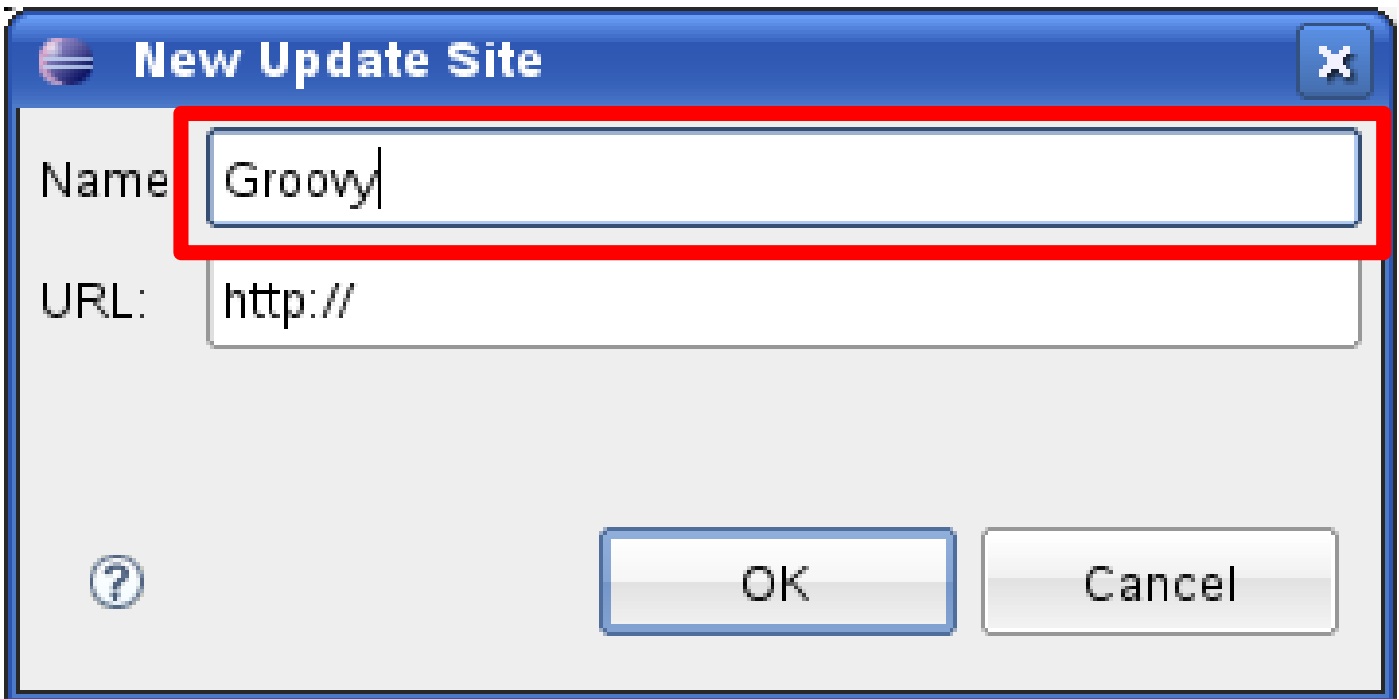


< Back

Next >

Finish

Cancel

A dialog box titled "New Update Site" with a blue header bar. It contains two text input fields: "Name" with the value "Groovy" and "URL:" with the value "http://". The "Name" field is highlighted with a red border. At the bottom, there are "OK" and "Cancel" buttons, and a help icon (question mark in a circle) on the left.

New Update Site

Name: Groovy

URL: http://

OK Cancel

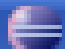
A dialog box titled "New Update Site" with a blue header bar. It contains two text input fields: "Name: Groovy" and "URL: http://dist.codehaus.org/groovy/distributions/update/". The URL field is highlighted with a red border. At the bottom, there are "OK" and "Cancel" buttons, and a help icon (question mark in a circle) on the left.

New Update Site

Name:

URL:

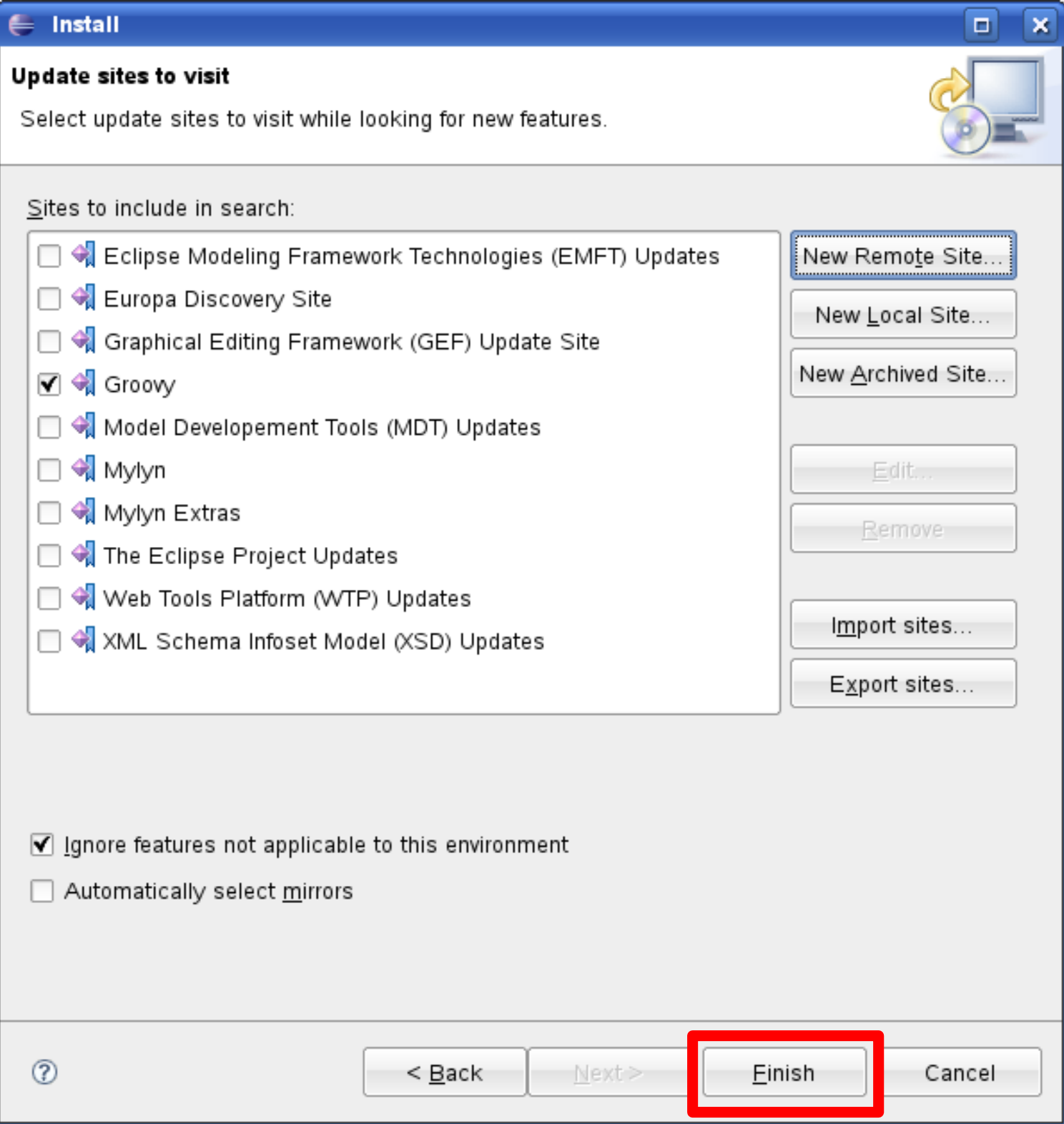


 **New Update Site** 

Name:

URL:





Search Results



Select features to install from the search result list.

Select the features to install:

- Groovy

[Deselect All](#)

[More Info](#)

[Properties](#)

[Select Required](#)

[Error Details...](#)

Groovy Distribution Directory

0 of 2 selected.

- Show the latest version of a feature only
- Filter features included in other features on the list



[< Back](#) [Next >](#) [Finish](#) [Cancel](#)



Search Results

Select features to install from the search result list.

Select the features to install:

- ▶ Groovy
 - Groovy
 - Groovy TestNG (Optional)

- Deselect All
- More Info
- Properties
- Select Required
- Error Details...

1 of 2 selected.

- Show the latest version of a feature only
- Filter features included in other features on the list



- < Back
- Next >
- Finish
- Cancel

Search Results

Select features to install from the search result list.



Select the features to install:

- ▼ [-] Groovy
 - ▶ Groovy
 - ▶ Groovy TestNG (Optional)

Deselect All

More Info

Properties

Select Required

Error Details...

1 of 2 selected.

- Show the latest version of a feature only
- Filter features included in other features on the list



< Back

Next >

Finish

Cancel

Feature License

Some of the features have license agreements that you need to accept before proceeding with the installation.



GroovyFeature 1.5.1.200801

see groovy.codehaus.org

- I accept the terms in the license agreement
- I do not accept the terms in the license agreement



< Back

Next >

Finish


Cancel

Installation



The following features will be installed. You can select a feature and change the location where the feature will be installed.

Features to install:

Feature Name	Feature Version	Feature Size	Installation Directory
 GroovyFeature	1.5.1.200801232227	Unknown	/home/eggeral/Desktop/eclipse/

Install Location: /home/eggeral/Desktop/eclipse

Change Location ...

Required space: Unknown

Free space: 1,11 GB



< Back

Next >

Finish

Cancel

Update Manager



Downloading:




plugins/org.codehaus.groovy.eclipse.cor...1.200801232227.jar (528K of 625K bytes)

Run in Background

Cancel

Details >>

Feature Verification

 Warning: You are about to install an unsigned feature.
You may choose to install the feature or cancel its installation.



This feature has not been digitally signed.
The provider of this feature cannot be verified.

Feature name: **GroovyFeature**

Feature Identifier: **org.codehaus.groovy.eclipse.feature_1.5.1.200801232227**

Provider: **The Codehaus**

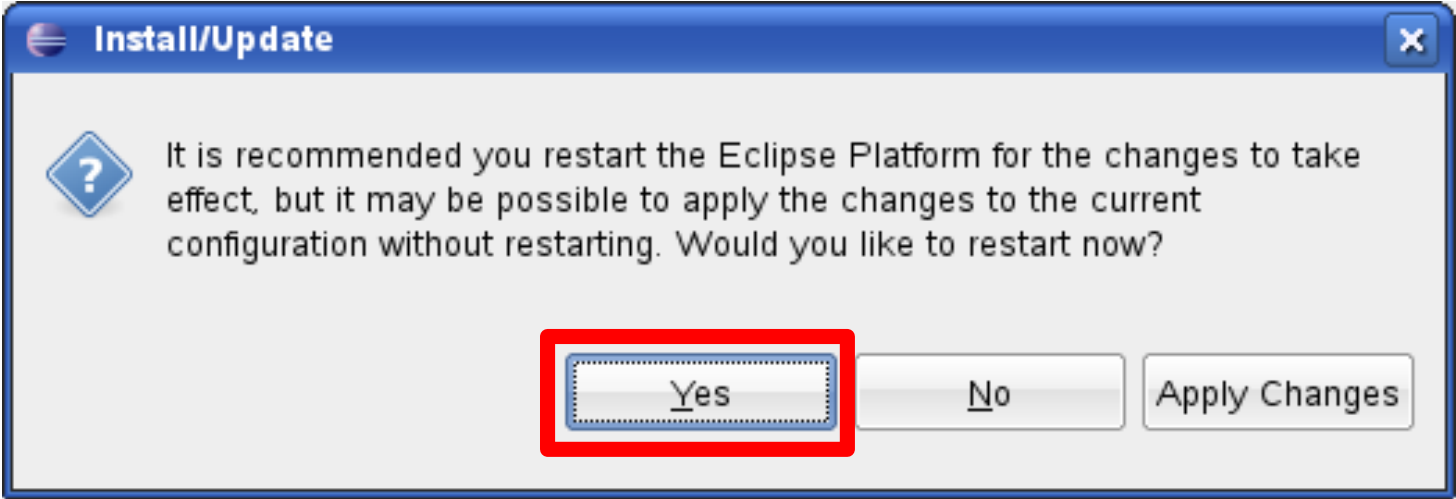
File Identifier: **org.codehaus.groovy.eclipse.feature_1.5.1.200801232227**



Install

Install All

Cancel



Install/Update



It is recommended you restart the Eclipse Platform for the changes to take effect, but it may be possible to apply the changes to the current configuration without restarting. Would you like to restart now?

Yes

No

Apply Changes